

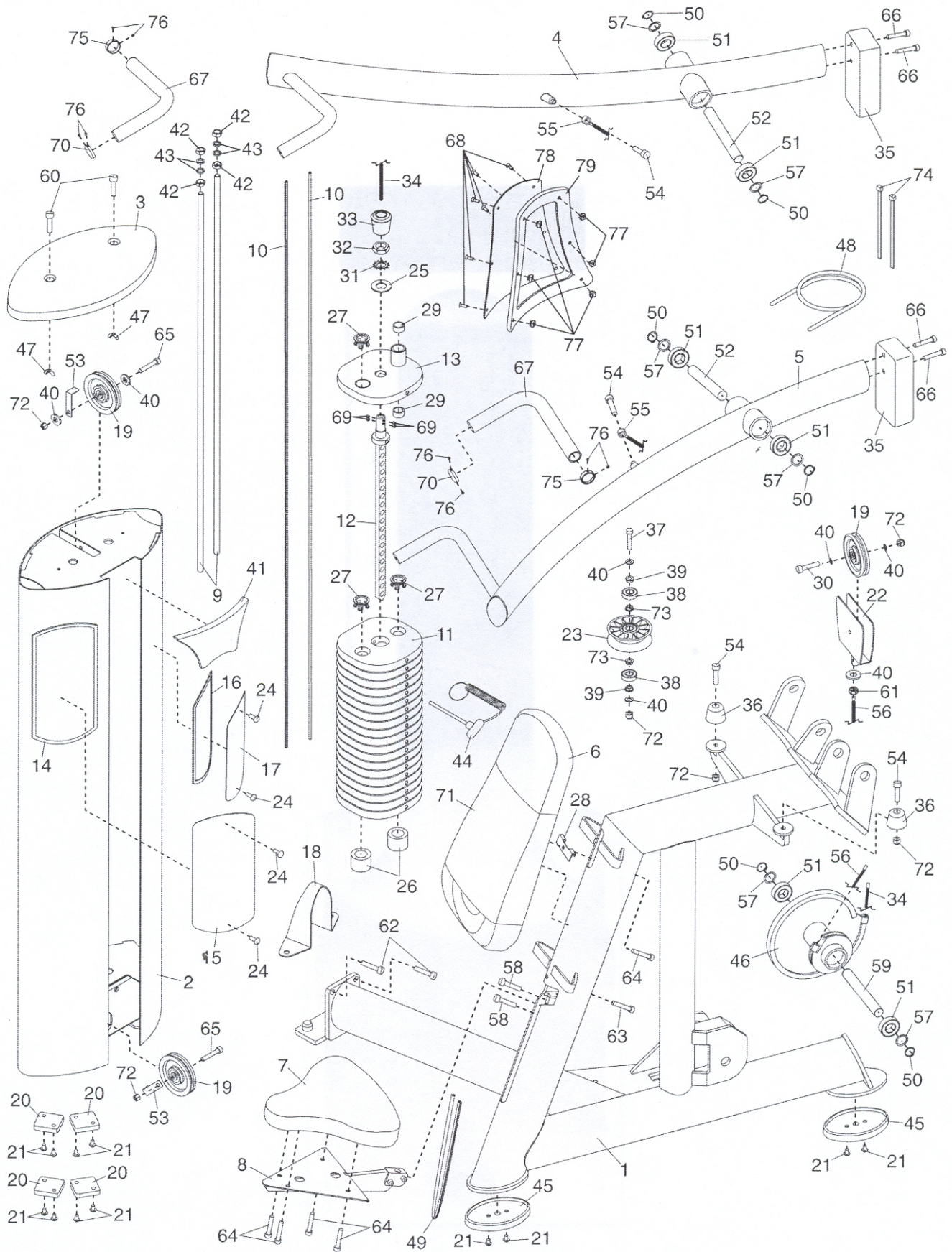
GZFI8073.5

<u>Key #</u>	<u>Part Number</u>	<u>Description</u>	<u>Qty.</u>
1	GZ4291	FRAME	1
2	GZ5584	TOWER	1
3	GZ3453	TOWER CAP	1
4	GZ5586	RIGHT ARM	1
5	GZ5587	LEFT ARM	1
6	GZ5108-04	BACKREST	1
7	GZ5108-05	SEAT	1
8	GZ4403	SEAT FRAME	1
9	GZ3248-10	WEIGHT GUIDE	2
10	GZ1504	LONG TRIM	2
11	GZ30598	WEIGHT	19
12	GZ5484	WEIGHT ROD	1
13	GZ4392	TOP WEIGHT	1
14	GZ1565	LONG PANEL FRAME	1
15	GZ30349	LONG PANEL	1
16	GZ1567	SHORT PANEL FRAME	1
17	GZ30347	SHORT PANEL	1
18	GZ30218	ANCHOR STRAP	1
19	GZ1003-08	PULLEY	3
20	GZ1517	TOWER FOOT	4
21	GZ1012-07	3/8"X1/2" BUTTON SCREW	12
22	GZ4186	U-BRACKET	1
23	GZ1003-04	V-PULLEY	1
24	GZ1021-01	RIVET	4
25	GZ1431	ROD WASHER 1"X2"OD	1
26	GZ1678	SMALL WEIGHT BUMPER	2
27	GZ1391-01	WEIGHT INSERT	39
28	GZ30020	BACKREST BRACKET	1
29	GZ1020	GUIDE BUSHING	2
30	GZ1013-02	3/8"X1 3/4" BOLT	1
31	GZ1419	STAR WASHER 1"	1
32	GZ1418	ROD JAM NUT	1
33	GZ1353	COUPLING COVER	1
34	GZ5020-18	TOWER CABLE ASSY LONG	1
35	GZ9404	COUNTER WEIGHT	2
36	GZ1111	LARGE BUMPER	2
37	GZ1013-05	3/8"X2 1/2" BOLT	1
38	GZ1169-01	V PULLEY BEARING	2
39	GZ1473	BUSHING	2
40	GZ1069	SERRATED WASHER 3/8"	7
41	GZ3516	COVER	1
42	GZ1084	5/8" JAM NUT	4
43	GZ1085	5/8" WASHER	4
44	GZ1754	WEIGHT PIN	1
45	GZ1486	FRAME FOOT	2
46	GZ5508	CAM	1
47	GZ1430	WINGNUT	2
48	GZ0180	BUNGEE CORD	1
49	GZ1504	SHORT TRIM	1
50	GZ1018-07	SNAP RING	6
51	GZ1011-01	1" BEARING	6
52	GZ3073-09	SHORT PIVOT ROD	2
53	GZ3102	CABLE GUARD	2
54	GZ1013-12	3/8"X1 1/4" BOLT	4
55	GZ5020-19	ARM CABLE ASSY MED	1
56	GZ5020-20	CAM CABLE ASSY SHORT	1
57	GZ1052	PIVOT WASHER 1"	6
58	GZ1013-14	1/4"X3/8" BOLT	2
59	GZ3073-05	LONG PIVOT ROD	1

60	174796	1/4"X1" BUTTON BOLT	2
61	GZ1083	3/8" FINE-THREAD NUT	1
62	GZ1009-03	1/2"X1 1/4" BOLT	2
63	GZ1014-07	3/8"X6 1/2" NON-PATCH BOLT	1
64	GZ1014-01	3/8"X1" NON-PATCH BOLT	5
65	GZ1013-04	3/8"X2" BOLT	2
66	GZ1013-13	3/8"X2 3/4" BOLT	4
67	GZ1746	HANDLE GRIP	2
68	192770	3/4"X3/4" BOLT	6
69	GZ1673	5/16-18X5/16 SET SCREW	4
70	GZ1759	HANDLE ENDCAP	2
71	GZ5124-08	BACKREST COVER	1
72	GZ1007	3/8" NYLON LOCKNUT	6
73	GZ1623	BUSHING	2
74	GZ1081	WIRE TIE	2
75	GZ1760	HANDLE COLLAR	2
76	GZ1761	#10X1/8" SET SCREW	8
77	GZ1735	1/4" CAGE NUT	6
78	GZ30828	REAR ACCESS PANEL	1
79	GZ1751	ACCES PANEL GASKET	1
		NON-ILLUSTRATED PARTS	
		WHAT PART IS NEEDED?	
#	GZ7412	OWNERS MANUAL	1
#	GZ7412FR	OWNERS MANUAL	1
#	GZ7412G	OWNERS MANUAL	1
#	GZ7412IT	OWNERS MANUAL	1
#	GZ7412SP	OWNERS MANUAL	1
		WHAT PART IS NEEDED?	
#	GZ7003	DECAL,WARNING,EXT,1-10 PT	1
#	GZ7003FR	DECAL,WARNING,EXT,1-10 PT	1
#	GZ7003G	DECAL,WARNING,EXT,1-10 PT	1
#	GZ7003IT	DECAL,WARNING,EXT,1-10 PT	1
#	GZ7003SP	DECAL,WARNING,EXT,1-10 PT	1
		WHAT PART IS NEEDED?	
#	GZ7026	DECAL,SELECTOR PIN INSERT	1
#	GZ7026FR	DECAL,SELECTOR PIN INSERT	1
#	GZ7026G	DECAL,SELECTOR PIN INSERT	1
#	GZ7026IT	DECAL,SELECTOR PIN INSERT	1
#	GZ7026SP	DECAL,SELECTOR PIN INSERT	1
		WHAT PART IS NEEDED?	
#	GZ7005	DECAL,CAUTION, MOVING PARTS	1
#	GZ7005FR	DECAL,CAUTION, MOVING PARTS	1
#	GZ7005G	DECAL,CAUTION, MOVING PARTS	1
#	GZ7005IT	DECAL,CAUTION, MOVING PARTS	1
#	GZ7005SP	DECAL,CAUTION, MOVING PARTS	1
		WHAT PART IS NEEDED?	
#	208842	DECAL,WARNING KEEP CLEAR	1
#	GZ7274FR	DECAL,WARNING KEEP CLEAR	1
#	GZ7274G	DECAL,WARNING KEEP CLEAR	1
#	GZ7274IT	DECAL,WARNING KEEP CLEAR	1
#	GZ7274SP	DECAL,WARNING KEEP CLEAR	1

EXPLODED DRAWING—Model No. GZFI8073.5

R1106A



EXPLODED DRAWING—Model No. GZFI8073.5

R1106A

